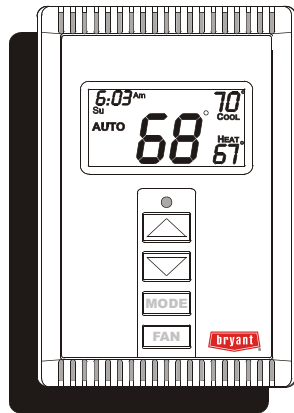


Wireless Programmable Digital Thermostat



- Wireless Operation
- 7-Day Programmable
- 4 Time Periods Per Day
- Programmable Fan
- Easy To Read Display
- Thermoglow™ Backlight
- Auto Changeover
- Dual Setpoint
- 2 Heat, 2 Cool Stages



Wireless

2 Stage
Heat & Cool
or
Heat Pump

© 2000 by Replacement Components Division
Carrier Corporation

Table Of Contents

FRONT PANEL	2
DISPLAY	3
QUICK START <i>Set the clock and go</i>	5
BASIC OPERATION	6
PROGRAMMING <i>4 Time Periods</i>	8
ADVANCED SETUP	12
ABOUT ADVANCED OPERATION	16
WARRANTY	20



CAUTION

Follow P474-1100REC *Installation Instructions* before proceeding.

SET THERMOSTAT TO MODE "OFF" PRIOR TO CHANGING SETTINGS IN SETUP OR RESTORING FACTORY DEFAULTS.



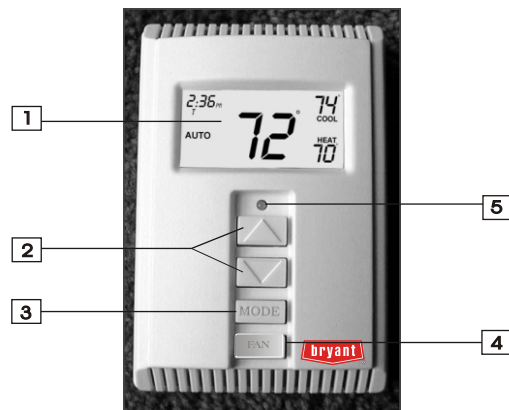
TSTATBBPRF01-B

FCC ID MUH-T10013

This device complies with Part 15 of the FCC rules. Operation is subject to the following two conditions: (1) this device may not cause harmful interference, and (2) this device must accept any interference received, including interference that may cause undesired operation.

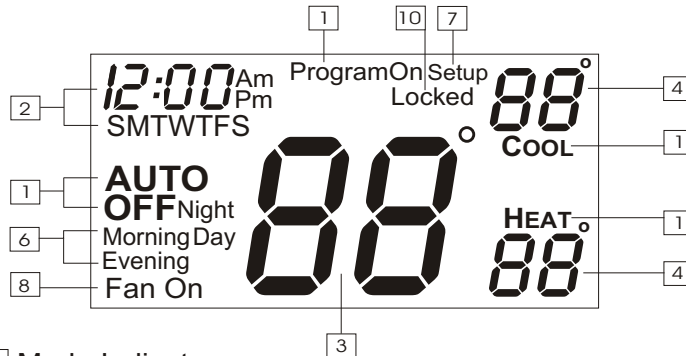
Important: To assure proper operation use only AA LITHIUM batteries.

Front Panel



- 1 **Liquid Crystal Display**
with Thermoglow™
- 2 **Up/Down Buttons**
- 3 **Mode Button**
- 4 **Fan Button**
- 5 **Transmission Indicator**

Display



1 Mode Indicators

Selects the operation mode of the equipment.

HEAT - indicates the heat mode.

COOL - indicates the air conditioning mode.

AUTO - indicates the system will automatically changeover between heat and cool modes as the temperature varies.

OFF - indicates the entire system is turned off.

PROGRAM ON - indicates the stored program is enabled to run. *Page 6.*

2 Clock with Day of the Week

Indicates the current time and day. This clock is also used to program the timer periods. *Page 5.*

3 Room Temperature Display

Indicates the current room temperature.

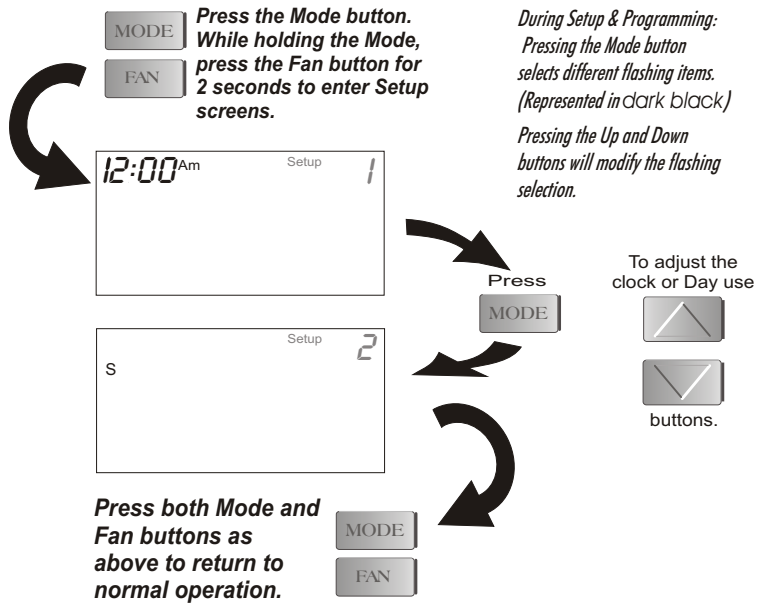
4 Desired Set Temperature

Indicates desired room temperature(s). *Page 7.*

Display

- 6 **Morning, Day, Evening & Night** Indication
Indicates the program time period. *Page 8-11.*
- 7 **Setup** Indication
Indicates the thermostat is in the programming mode. *Page 12.*
- 8 Fan Operation Indication
Fan On - indicates constant, continuous fan operation.
When **Fan On** is not lit - indicates the fan will only operate when necessary to heat or to cool. *Page 7.*
- 10 **Locked** Indication
Locked appears after the right combination of buttons are pressed, rendering the buttons inoperative. *Page 17.*

Quick Start *Set the Clock and Go*



The Thermostat is preprogrammed from the factory to operate 1 or 2 Stage equipment* without the need for further programming. To optimize the installation of this thermostat follow the instructions in the Advanced Setup section.

** The thermostat is not preprogrammed from the factory to operate electric heat or heat pump systems. To control these systems, follow the steps in the Wireless Receiver Instructions.*

Basic Operation

Select Mode

The **HEAT** setting indicates the temperature the room has to reach before the furnace will turn on to heat the room.



Press
MODE

The **COOL** setting indicates the temperature the room has to reach before the air conditioner will turn on to cool the room.



Press
MODE

AUTO will automatically select heat or cool based on room temperature demand.



Press
MODE

Program On will activate the stored timer operation. (Morning, Day, Evening & Night Periods)



Press
MODE

OFF indicates both heating and air conditioning systems are turned off.



Press
MODE

Basic Operation

Select Desired Temperature



In any mode, adjust the desired Set Temperature with



buttons.

Pressing the up/down buttons in Auto mode will adjust **both** the heat and cool set temperatures simultaneously.
Pressing the up/down buttons in Heat or Cool modes will adjust only the heat or cool set temperature.

Fan Operation



Fan On indicates constant fan operation. This feature is active even if the thermostat is set to **Off**.

Programming 4 Time Periods (Unit # 1 only)

Time period programming is only available on Unit Number 1.



MODE

Press the Mode button. While holding the Mode, press the Up button for 2 seconds to enter time period programming.

Use the back cover Programming Worksheet to help with this section.



Select the day of week (M - S)



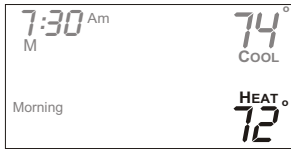
Adjust the start time for Morning.



Adjust the cooling setpoint for Morning. (35 - 99°)



Adjust the heating setpoint for Morning. (35 - 99°)

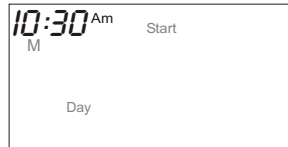


Continued

Programming 4 Time Periods



Adjust the start time for Day.

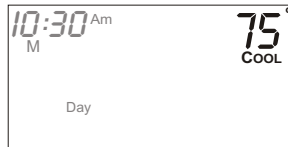


Press

MODE



Adjust the cooling setpoint for Day.
(35 - 99°)

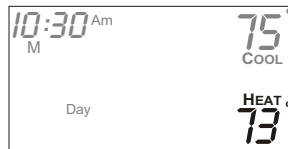


Press

MODE



Adjust the heating setpoint for Day.
(35 - 99°)

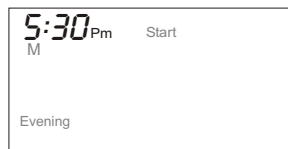


Press

MODE



Adjust the start time for Evening.

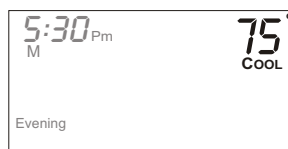


Press

MODE



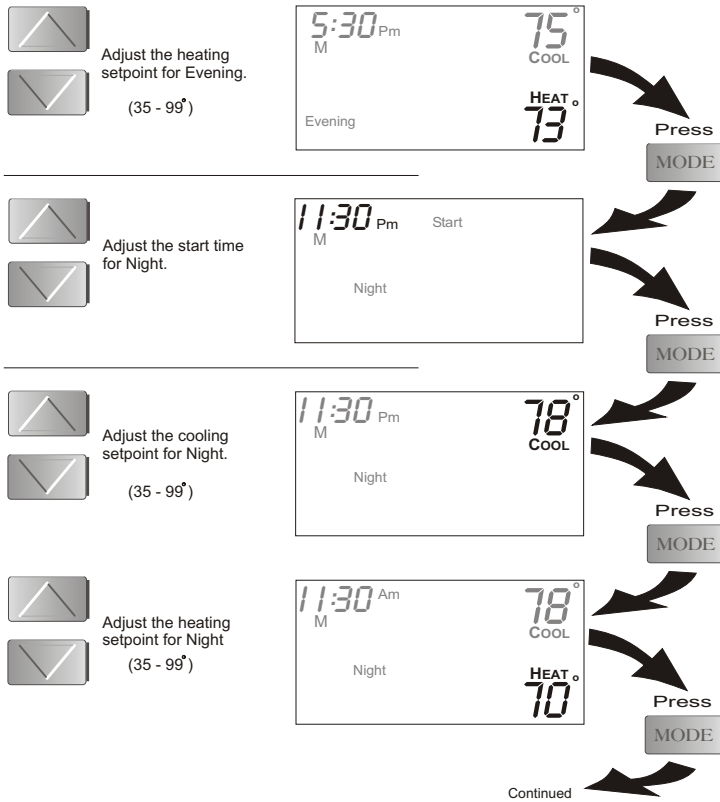
Adjust the cooling setpoint for Evening.
(35 - 99°)



Press

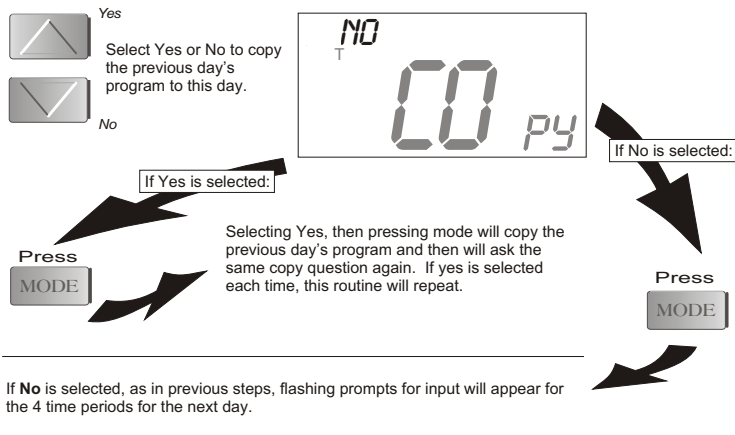
MODE

Programming 4 Time Periods



Programming 4 Time Periods

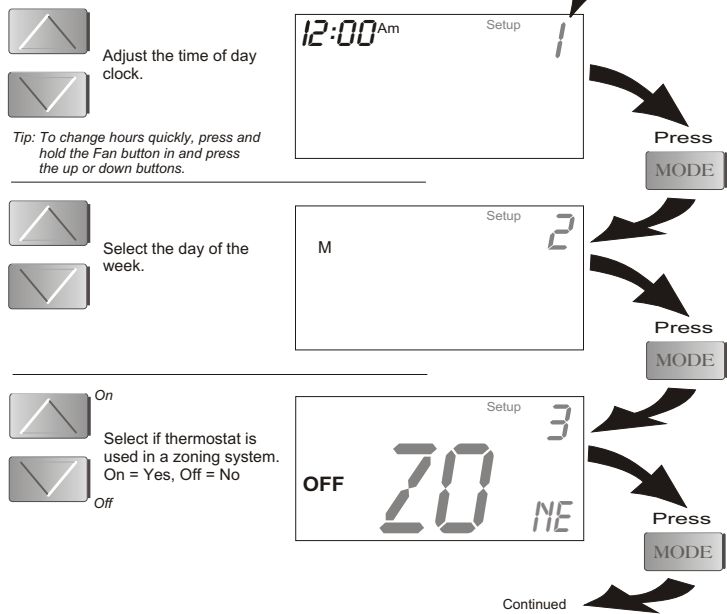
The copy command becomes available after programming the entire previous day.



Advanced Setup

MODE **Press the Mode button.**
FAN **While holding the Mode, press the Fan button for 5 seconds to enter Setup screens.**

NOTE: Each step # is located at the top right corner of the display for easy reference.



Advanced Setup

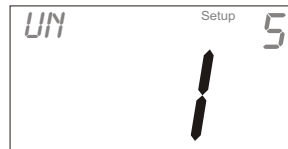
- Select the House Code number. *The receiver must also use this same number for proper operation.*



Press

MODE

- Select the Unit ID number. If more than 1 thermostat is used, each will need a different Unit ID number.



Press

MODE

- Adjust the deadband from 1 - 6 degrees.



Note: Available only on Unit ID #1.



Press

MODE

- Adjust the minimum **difference** between cooling & heating setpoints. (0 - 6°)



Press

MODE

- Select the cycles per hour limit. d=cycles per hour limit defeated. d1=d + defeat 5 min. Compressor lockout. (d, d1, 2 - 6)



Note: Available only on Unit ID #1.

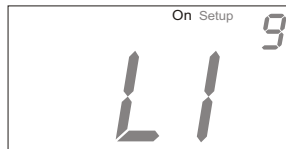


Press

MODE

Advanced Setup

- On
Select the display back-light always **On**, or **Off** after 8 seconds.
- Off



Press

MODE

- Adjust the programmable fan timer. 0 - 60 minutes. 0:00 = off
-



Press

MODE

Note: Available only on Unit ID #1.

- C
Select thermostat operation in degrees Fahrenheit or Centigrade.
- F



Press

MODE

FAN

Press the Mode button. While holding in the Mode, press the Fan button for 2 seconds to leave the Setup screens. If no buttons are pressed, the display will leave the setup screens after 30 seconds.

Advanced Setup

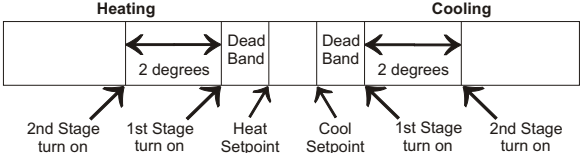
Advanced Setup Table

Step #	Description	Range	Factory Default
1	Time of day clock set	24 hour	12:00 Am
2	Day of the week	Sun - Sat	Monday
3	Zoning Use	Off / On	Off
4	House Code	0 - 63	0
5	Unit Number	1 - 4/1 - 16	1
6**	Deadband or Temperature swing	1 - 6	2
7	Forced minimum difference heat/cool	0 - 6	2
8**	Cycles per hour	d, d1, 2 - 6	6
9	Thermoglow Backlight	Off / On	Off
10**	Programmable Fan	0:00 - 0:60	0:00
11	Fahrenheit or Centigrade	F / C	F

**** Available on Unit Number 1, only.**

About Advanced Features & Operation

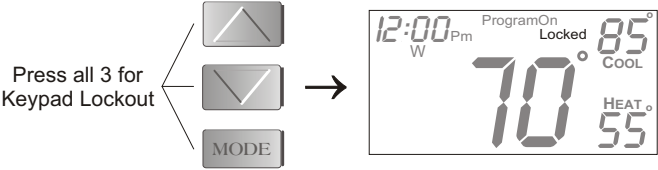
- * MEMORY BACKUP - In the event of a power loss, the thermostat will retain the stored program settings without external power or batteries.
- * 2 STAGE OPERATION - The 2nd Stage of heat or cool is turned on when (1) the 1st Stage has been on for a minimum of two minutes, **and** (2) the temperature spread from the setpoint is equal to or greater than: *the setpoint plus the deadband, plus 2 degrees.*



- * MINIMUM HEAT/COOL SETPOINT DIFFERENCE - The Heat and Cool setpoints will not be allowed to come any closer to each other than the value set in Advanced Setup *step # 7, on page 13*. This minimum difference is enforced during Auto changeover and Program On operation.
- * PROGRAMMABLE FAN - If the Programmable Fan timer is set to a value other than 0, the fan will run for the preprogrammed amount of time, *page 14, step# 10*. The Programmable Fan timer will start the fan at the top of each hour. The Programmable Fan may be active even if the thermostat mode is Off.

About Advanced Features & Operation

- * **KEYPAD LOCK** - To prevent unauthorized use of the thermostat, the front panel buttons may be disabled. To disable, or 'lock' the keypad, press and hold in the Mode button. While holding the Mode button in, press the Up and Down buttons in together. The **Locked** icon will appear on the display.



To **unlock** the buttons, again press and hold the Mode button. While holding the Mode button in, press the Up and Down buttons in together. The **Locked** icon will disappear from the display.

About Advanced Features & Operation

- * DUAL SETPOINT BEHAVIOR - The adjustable setpoint range is: 35 - 99 degrees in Fahrenheit and 7 - 35 degrees in Centigrade. When in the modes Heat or Cool, this adjustable range is unhampered.

When adjusting any Auto mode, including programming time periods, the thermostat will not allow the Heat setpoint to get closer to the Cool setpoint than the value programmed as the minimum difference in *step 7, page 13*.

When entering the Auto mode from Cool, the Heat and Cool setpoints will remain spread apart by the amount that they were adjusted, prior to entering Auto.

For example: If the Cool setpoint was set to 80 while in the Cool mode and the Heat setpoint was adjusted to 70 while in the Heat mode, upon entering the Auto mode the Heat and Cool setpoints would be 80 and 70. **Both** setpoints would then move up and down together, (in this example spread by 10 degrees), by pressing the up or down buttons.

To move the Heat and Cool setpoints closer together, enter the Cool or Heat mode by pressing the Mode button, then adjust the setpoint(s) closer together. Heat is limited to how close it can come to Cool by *step 7, page 13*.

About Advanced Features & Operation

- * **FACTORY DEFAULTS** - If, for any reason it is desirable to return all stored settings back to the factory default settings, press the Mode button. While holding the Mode button in, press the Down button for 2 sec. All icons will appear. Press and hold in the Fan button until **Fd** appears. This resets all factory settings.
- * **To calibrate room temperature**, press the Mode button. While holding the Mode button in, press the Down button for 2 seconds. All icons will appear. Press the Mode button once more. At this point use the Up and Down buttons to calibrate room temperature, if needed. Press the Mode button to return to normal operation. **NOTE CAUTION ON PAGE 1.**
- * **LOW BATTERY WARNING** - When the AA Lithium batteries reach a preset low power state, the display will flash the Low Battery icon. After this icon appears change the batteries within a few weeks. Use only AA Lithium batteries for proper operation.
- * **Battery Eliminator (optional accessory)** - Use only the Totaline accessory (P474-0800) for proper operation. 3vdc, 50ma output, negative center conductor.

Warranty

This warranty is valid for a period of one year from the date of purchase. It covers defects in materials and workmanship under normal use and service. This warranty does not cover damage caused by accidents, misuse, or unauthorized repairs. The warranty is void if the product is used in a manner not intended by the manufacturer. For more information, please contact the manufacturer.

THIS WARRANTY DOES NOT INCLUDE LABOR OR OTHER COSTS incurred in diagnosis, repair, or replacement of parts. Such costs may be covered by a separate warranty provided by the manufacturer.

THIS WARRANTY APPLIES ONLY TO PRODUCTS IN THEIR ORIGINAL INSTALLATION LOCATION AND BECOMES VOID UPON REINSTALLATION.

LIMITATIONS OF WARRANTY ALL IMPLIED WARRANTIES INCLUDING IMPLIED WARRANTIES OF FITNESS FOR A PARTICULAR PURPOSE AND MERCHANT ABILITY ARE HEREBY LIMITED TO THE PERIOD FOR WHICH THE LIMITED WARRANTY IS GIVEN. SOME STATES DO NOT ALLOW LIMITATIONS ON HOW LONG AN IMPLIED WARRANTY LASTS SO THE ABOVE MAY NOT APPLY TO YOU. THE EXPRESSED WARRANTIES MADE IN THIS WARRANTY ARE EXCLUSIVE AND MAY NOT BE ALTERED, ENLARGED OR CHANGED BY ANY DISTRIBUTOR, DEALER OR OTHER PERSON WHATSOEVER.

ALL WORK UNDER THE TERMS OF THIS WARRANTY SHALL BE PERFORMED DURING NORMAL WORKING HOURS. ALL REPLACEMENT PARTS WHETHER NEW OR RE-MANUFACTURED ASSUME THE WARRANTY PERIOD ONLY IF THE REMAINING PERIOD OF THE WARRANTY.

THE COMPANY WILL NOT BE RESPONSIBLE FOR:

- Normal maintenance, adjustments, and servicing instructions owned by the user.
- Damage to the product as a result of fire, flood, lightning, or other external causes.
- False statements or omissions in the user manual or other literature.
- Damage to the product caused by accidents, misuse, or environmental conditions beyond the control of the manufacturer.
- Products not supplied or designed by the manufacturer or damaged by the user.
- Manufacturer's products sold outside the continental USA, Alaska, Hawaii, and Canada.
- Electrical or other causes not covered by the manufacturer's warranty.
- ANY SPECIAL DIRECTOR CONSEQUENTIAL PROPERTY OR COMMERCIAL DAMAGE OF ANY NATURE WHATSOEVER. Some states do not allow the exclusion of incidental or consequential damages so the above limitation may not apply to you.

This warranty gives you specific rights and you may have other rights which may vary by state.

Programming Worksheet

see page 8

DAY	PERIOD	START TIME	COOL	HEAT	
M O N D A Y	Morning				
	Day				
	Evening				
	Night				
T U E S D A Y	Morning				<i>Copy Mon → Tue</i>
	Day				<input type="checkbox"/> No
	Evening				<input type="checkbox"/> Yes
	Night				
W E D N E S D A Y	Morning				<i>Copy Tue → Wed</i>
	Day				<input type="checkbox"/> No
	Evening				<input type="checkbox"/> Yes
	Night				
T H U R S D A Y	Morning				<i>Copy Wed → Thu</i>
	Day				<input type="checkbox"/> No
	Evening				<input type="checkbox"/> Yes
	Night				
F R I D A Y	Morning				<i>Copy Thu → Fri</i>
	Day				<input type="checkbox"/> No
	Evening				<input type="checkbox"/> Yes
	Night				
S A T U R D A Y	Morning				<i>Copy Fri → Sat</i>
	Day				<input type="checkbox"/> No
	Evening				<input type="checkbox"/> Yes
	Night				
S U N D A Y	Morning				<i>Copy Sat → Sun</i>
	Day				<input type="checkbox"/> No
	Evening				<input type="checkbox"/> Yes
	Night				



Printed on recycled paper.

P/N 88-288